

- ⊕ **EasyFlow®** modality
- ⊕ **CFU®** EasyZoom Technology
- ⊕ **CTR®** Cool Touch RF Technology
- ⊕ **ACE®** Active Cooling Emission
- ⊕ Transducers Extended Lifespan



Non-surgical Face Lift and Body Sculpting

RENOVA®

RENOVA®

Technical Data

General Features

Voltage Supply	230 Vac ± 10% - 50/60Hz
Max Power	300 VA
Fuses	2 x F2A 250 V
Safety Class and Type Applied Part	I BF
Dimension [W x D x H]	660 x 600 x 310 mm

Microskinabrasion (Abralase)

Material	Aluminium Oxide
Max Suction Pressure	66,6kPa
Laser Wavelength (Pointer)	650nm
Laser Power (Pointer)	1mW (class 2)

Radiofrequency (CTR)

Operating Mode	Bipolar
Frequency	1MHz
Max Power	25W@1kohm

Electroporation (MESO)

Waveform	Amplitude modulated signal with sine wave
Main Frequency	1,1KHz
Modulating Frequency	0,5Hz
Max Intensity	0,8mA per 10cm2

Ultrasound (CFU)

Frequency	3MHz
Focal Depth	From 1,5mm to 11mm
Max Intensity	3W/cm²

Handpieces



Microskinabrasion (Abralase)



Ultrasound (CFU)



Radiofrequency (CTR)
Electroporation (MESO)

RENOVA 100% MADE IN ITALY

Biotec Italia guarantees the genuineness of a truly Italian product and the superior quality of its products for the infinite attention paid to every single detail of the manufacturing process.

Biotec Italia Guarantee:

- Entirely made in Italy.
- Made using only Italian semi-finished products.
- Made with top quality materials.
- Made adopting Italian technological expertise and know how.
- Made using Biotec Italia's own technological designs.



www.biotecitalia.com

Biotec Italia srl

Viale della Repubblica, 20 - 36031 Dueville (Vicenza)
tel. 0444.591683 - fax. 0444 361032
info@biotecitalia.com

Biotec Italia S.r.l. biotecitaliamed biotecitalia

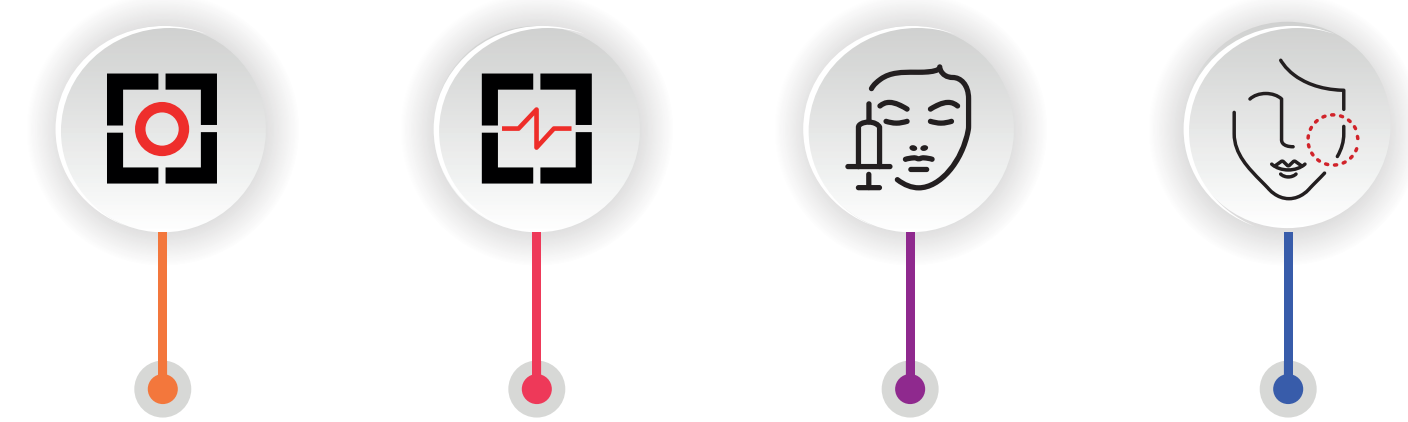
REV 02 del 24/07/18



RENOVA®

EASYFLOW® On The skin. Breakthrough Technology.

Renova has been clinically tested and proven to safely tighten facial skin from the inside out, reducing superficial and deep wrinkles and repairing collagen and elastin fibers. EASYFLOW® breakthrough technology is easy and safe to operate and help to reverse the effects of gravity and aging. The skin is lifted, looks remarkably younger, and has a noticeably healthy colour and glow.



CFU® EASYZOOM
Delivers Center Focused Ultrasound energy precisely in the skin where is needed, according to the depth desired, generating more than 65°C coagulation point.

CTR® COOL TOUCH RF
Unipolar radiofrequency creates an even heating at skin level, hence stimulating contraction and regeneration of collagen fibers.

MESO® TRANSDERMAL
High-intensity pulse allows deep, subcutaneous penetration of cosmetic products and active ingredients sensitive to electroconduction.

ABRALASE® LASERPEEL
The precision of a high-tech applicator projecting a flow of fine aluminum crystals, which works in synergy with a 630nm diode laser.



ACE® Active Cooling Emission



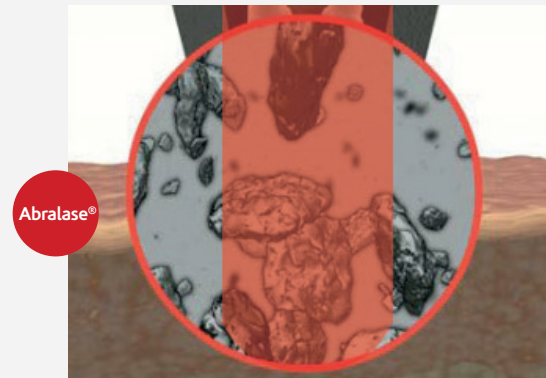
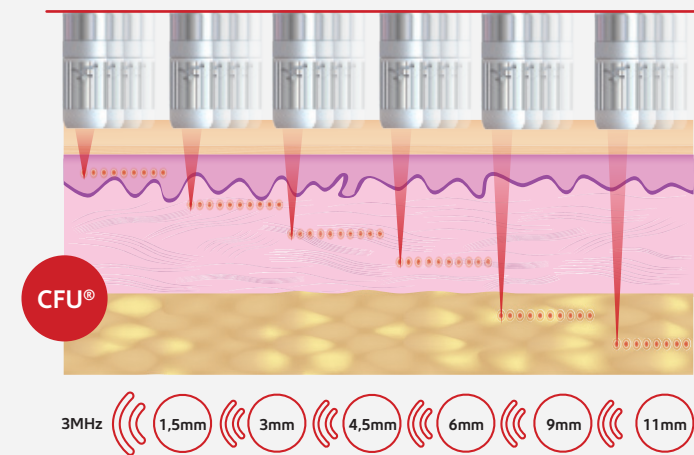
Water cooling
Active fluid circulation guarantees CFU® CTR® and MESO® technologies stability. Fluid circulates in the applicators tip and returns in the reservoir in the machine, where the heat is extracted.

Extended lifespan
ACE® Technology guarantees transducer thermal stability, enhancing vibration efficiency, reducing heat shock failure and increasing cartridge lifespan up to 20.000.000 pulses.

Enhanced safety
ACE® Technology improves the margin of safety associated with CFU® CTR® and MESO® procedures by cooling the handpiece's tip in contact with the skin.

CFU® Center Focused Ultrasound

Treatment with CFU® can be customized to meet the unique physical characteristics of each customer by adjusting energy of its focal depth. Ultrasound geometric focus configuration, selects the depth and quantity of energy delivered during the treatment. Face procedures utilizes a focal depth of 1.5, 3.0 and 4.5mm. They can be used in combination to target the dermis (1.5mm), deep dermis (3.0mm), or the subdermal tissues (4.5mm) including the SMAS layer. Treatment of unwanted fat is performed using focal depths of 6,9 and 11mm.



ABRALASE® Laser Peel

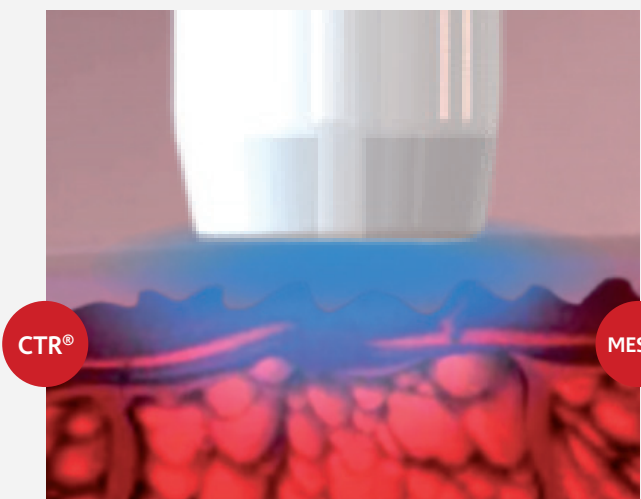
In the Abralase procedure small particles (100 micron) of aluminium oxide remove the outer layer of skin (epidermis). Peeling depth is dependent on strength of the crystals flow, speed of movement of the handpiece and the number of passages per anatomic site. The laser beam will simultaneously heat the underlying skin (dermis). The combined action stimulates growth of new collagen fibers. As the treated area regenerates, the new skin that forms is smoother and firmer.

MESO® Transdermal delivery

MESO procedure uses modulated currents at low intensity that creates new extracellular pathways. This alteration of the cell membrane allows a higher permeability to a large variety of hydrophilic molecules, which would otherwise not be able to enter the cell. Once formed, these electropores open from a few seconds to a few minutes allowing the delivery of water-soluble molecules, peptides, proteins, and other macromolecules.

CTR® Cool Touch Radiofrequency

CTR unipolar radiofrequency works by producing electrical pulses converted to thermal energy delivered within the dermis. The generated thermal energy causes initial collagen structural change, which is created within these thermally modified tissues. Immediate tissue contraction and subsequent formation of new collagen leads to a lifting effect

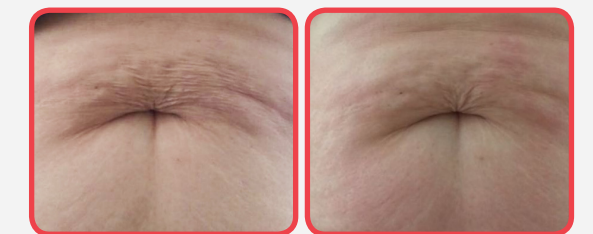


Treatment Indications

- Facial skin laxity
- Facial wrinkles
- Open pores, uneven skin
- Blurred jawline
- Double chin
- Hyperhidrosis
- Hair loss



before 90 days after 1 session



before 90 days after 1 session

A minimally invasive approach delivering precise and focused ablative energy

CFU® is transmitted through the epidermis and focused at desired locations within the skin